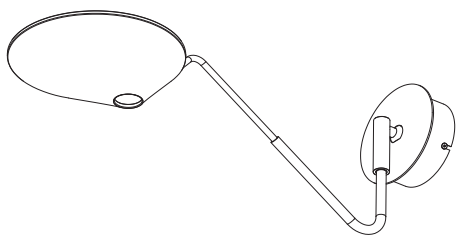


Assembly instructions  
Instructions de montage



NÓN LÁ - A / 03-04  
Jorge Pensi  
DESIGN ESTUDIO

#### DATA / RENSEIGNEMENTS

LIGHT / LUMINAIRE: NÓN LÁ A/03-04  
TYPOLOGY / TYPOLOGIE: WALL LIGHT / APPLIQUE  
YEAR / ANNÉE: 2012

#### MADE IN SPAIN / PRODUIT EN ESPAGNE

Product entirely produced in Barcelona.

Produit fabriqué entièrement à Barcelona.

#### TESTS / TESTS

This product has been subjected to the electrical safety test for: continuity, insulation, dielectric strength.

Ce produit a été soumis à des tests de sécurité électrique: continuité, isolation, rigidité diélectrique et prise de terre.

#### RAW MATERIALS / MATIÈRES PREMIÈRES

Forged aluminum hood.

Capot en aluminium forgé.

#### CLEANING INSTRUCTIONS INSTRUCTION POUR LE NETTOYAGE

Do not use alcohol or solvents, use a soft cloth.

Ne pas utiliser d'alcool ou d'autres solvants, utilisez un chiffon doux.

Tels.: +34 93 871 31 52 / +34 93 844 47 54  
Fax: +34 93 846 20 89  
e-mail: info@bover.es  
www.bover.es

Avinguda Catalunya, 173  
Pol. Ind. Sud  
08440 Cardedeu  
Barcelona · Spain

BOVER IL·LUMINACIÓ & MOBILIARI SL

# bover

#### CERTIFIED BY / CERTIFIÉ PAR



All products are manufactured according to the standards :  
Tous les produits sont fabriqués selon les standards suivants:

UL 1598  
CSA C22.2 N° 250  
UL 8750



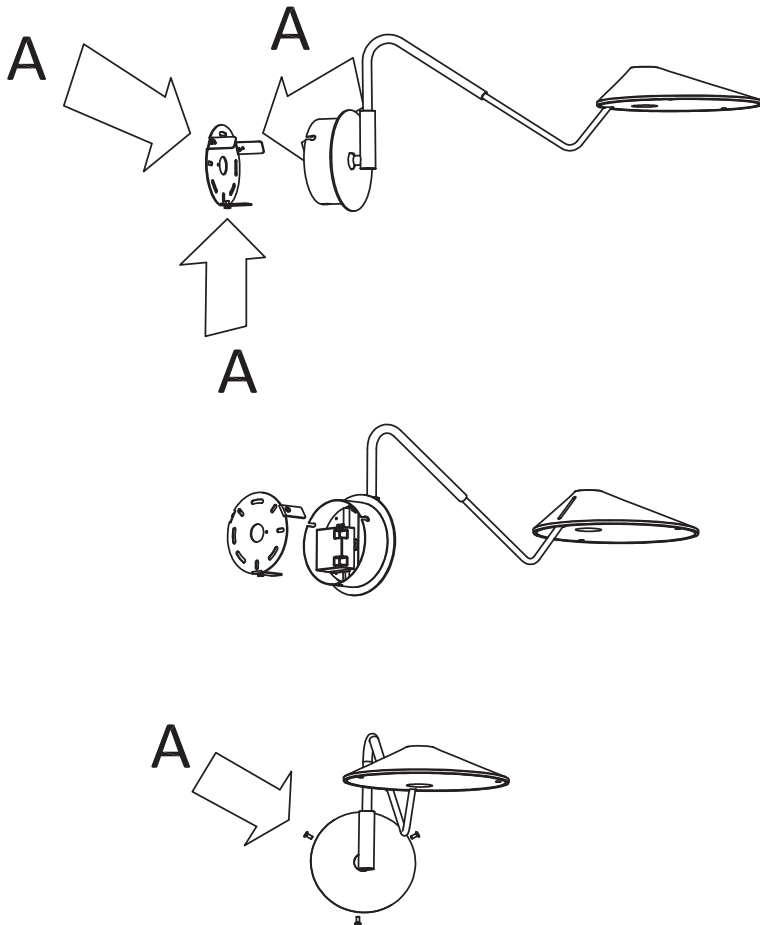
LED 10,5 W



#### TECHNICAL DATA / INFORMATIONS TECHNIQUES

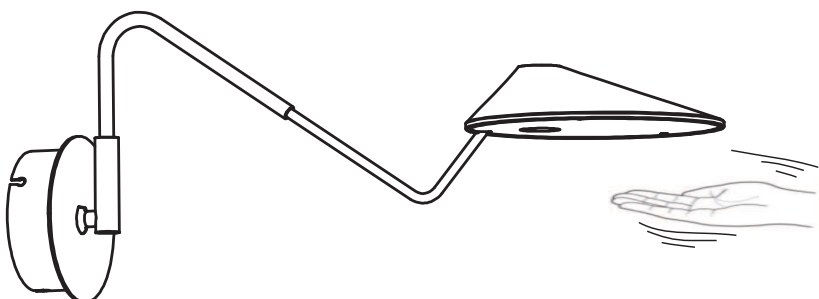
Light for dry locations use.  
Input voltage: 120-60Hz

Luminaire pour utilisation intérieure seulement.  
Tension d'alimentation: 120-60Hz



#### NOTE

Due to LED manufacturing process characteristics, luminaires including this light source may have a slight variation in the light tone.



#### CAUTION

**THIS PRODUCT MUST BE INSTALLED IN ACCORDANCE WITH THE APPLICABLE INSTALLATION CODE BY A PERSON FAMILIAR WITH THE CONSTRUCTION AND OPERATION OF THE PRODUCT AND THE HAZARDS INVOLVED.**

No loose strans or loose connections should be present. Secure with U.L. certified wire connectors and electrical tape.



#### WARNING

The electricity **MUST** be turned off at the MAINS FUSE BOX before installing of this luminaire; turning the power off using the light switch is not sufficient to prevent electrical shock.

Luminaires weighting 25 lbs (50 lbs for U.S.A) or more must be mounted directly to the building structure, independently of the electrical box; this installation should not be made on a radiantly heat type ceiling.

The luminaire is not intended to support external weight other than the provided components.



#### ELECTRICAL CONNECTION

Attach grounding wire (green insulate or bare copper) from the supplier circuit to the mounting bracket with the green ground attachment screw provided.

Connect the grounding wire of the luminaire to the ground conductor of the supply circuit. Attach all grounding conductors to the mounting bracket with the green ground wire attachment screw.

Referring to the Wire Connection Chart, connect the black and white wires



#### FINAL INSTALLATION

Install light bulbs, refer to the relamping label located near the lampholder for recommended wattage.

**DO NOT EXCEED THE RECOMMENDED WATTAGE.**

Restore electricity and check the operation of the luminaire.



#### ASSEMBLY INSTRUCTIONS

Disassembly the wall bracket untightening the A screws, then secure it to the wall.

Connect to mains. The wire cross-section is up to 1,5 mm<sup>2</sup>; 16-20 AWG.

Secure the Nón Lá A/03-04 to the bracket tightening the A screws.

#### PROXI SENSOR SWITCH:

The sensor is approximately in the middle of the shade.

To turn On and Off:

The switch works approaching or putting away your hand from the diffuser.

The distance that it needs to detect the movement is near 4 cm. The lamp enlightens when you approach and put away your hand to the diffuser in a gesture of near half a second.

The system is dimmable:

Approaching your hand and keeping it at less than 4cm of the diffuser dims the light up or down; you must wait for the reaction.

The System remembers the last dim setting.



WIRING DIAGRAM / CÂBLAGE DIAGRAMME

GREEN / VERT = G  
BLACK / NOIR = L  
WHITE / BLANC = N

0-10 DIMMING CONTROL / CONTRÔLE DE GRADATION

RED - PURPLE / ROUGE - VIOLET = (+)  
BLUE - YELLOW-GREY / BLEU-JAUNE - GRIS = (-)

WARNING / ATTENTION :

*Disconnect power before the installation or maintenance of the ballast.  
The ballast must be properly connected to ground.  
Installation must be done according to National and Local Electrical Codes.  
Keep the luminaire fully on during 100 hours before the first adjustment.*

Débranchez l'alimentation avant d'installer ou de réparer.  
Le ballast doit être correctement raccordé à terre.  
Installation selon les normes électriques nationaux et locaux.  
Utiliser la nouvelle lampe pendant 100 heures à pleine puissance avant la première régulation.